
Lagoon Project Update

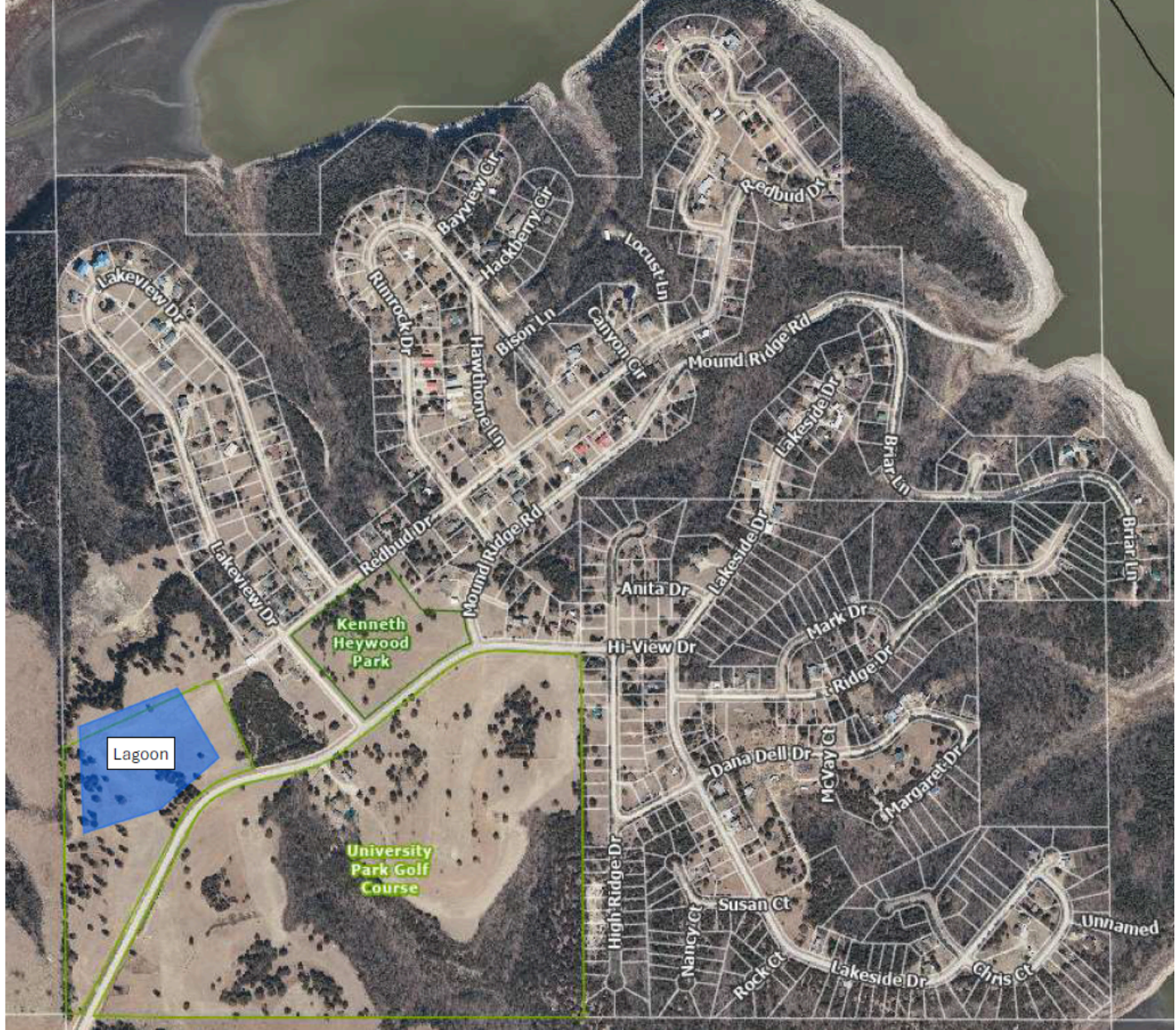
2 messages

Evan McMillan <emcmillan@rileycountyks.gov>
To: UP Board <universityparkboard@gmail.com>
Cc: John Ellermann <jellermann@rileycountyks.gov>

Mon, Apr 22, 2024 at 5:39 PM

University Park Board,

I was notified there were a few questions regarding the upcoming lagoon location and its proximity to the nearby homes and fire station. The lagoon is planned to be constructed west of the water tower, as far west as allowable by the KDHE requirements (see below). KDHE currently requires a 100-ft separation distance from the water's edge to the property lines, and a 500-ft setback from water's edge to existing homes. It sounds like both of these distances can be reduced through a variance signed by the landowner/homeowner. The lagoon is still under design, so it is hard to say how close the lagoon will be to the homes near the water tower. That being said, we are working on contacting the landowner to the west to potentially obtain a variance to locate the lagoon closer to the property line and as far from existing homes as possible. I will continue to follow up on any developments in the project, and as always, feel free to reach out with any questions you may have.



On another note, last week KDHE announced they will be investing another \$462,210.00 into the University Park Lagoon project, bringing the total funding amount to \$1,962,210.00. See the link below for the KDHE news release.

<https://www.rileycountyks.gov/CivicAlerts.aspx?AID=1689>

Thank you,

Evan McMillan

Public Works Asst. Director/County Engineer

Riley County Public Works Dept.

6215 Tuttle Creek Blvd

Manhattan, KS 66503